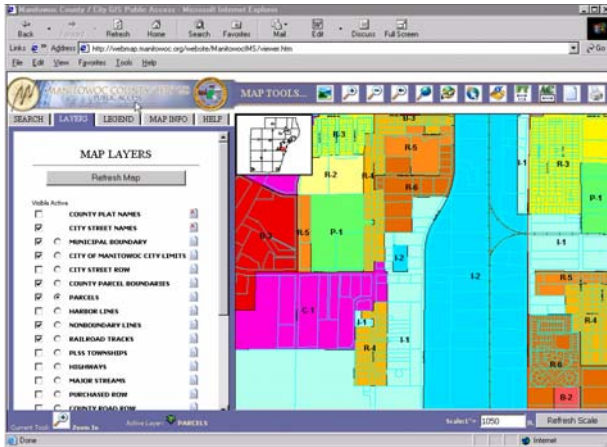
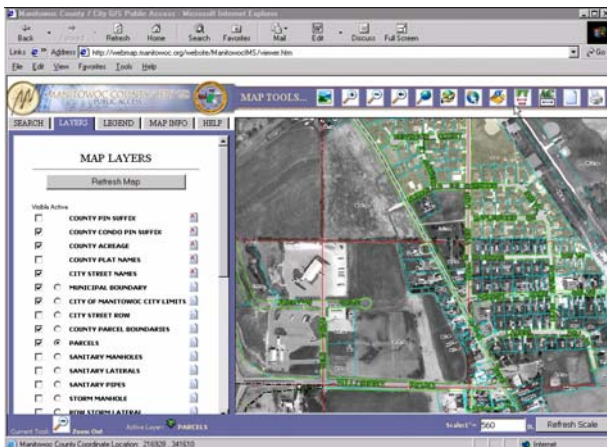


# Information Available On-Line



- ZONING
- PARCEL BOUNDARIES
- PARCEL ASSESSMENT INFORMATION
- MUNICIPAL BOUNDARIES
- SANITARY LATERALS
- SANITARY MANHOLES
- STORM PIPES
- STORM MANHOLES
- STREET RIGHT-OF-WAY
- LAKES
- STREAM
- AERIAL PHOTOGRAPHY



For Questions Or  
Assistance

**MANITOWOC COUNTY**



**[www.co.manitowoc.wi.us](http://www.co.manitowoc.wi.us)**

With questions or to report errors:  
Manitowoc County GIS Office  
920-683-2781

Zoning and Planning Information:  
Manitowoc County Planning and Park Commission  
920-683-4185

**CITY OF MANITOWOC**



**[www.manitowoc.org](http://www.manitowoc.org)**

Mapping and Planning Questions  
City of Manitowoc Planning  
920-686-6930

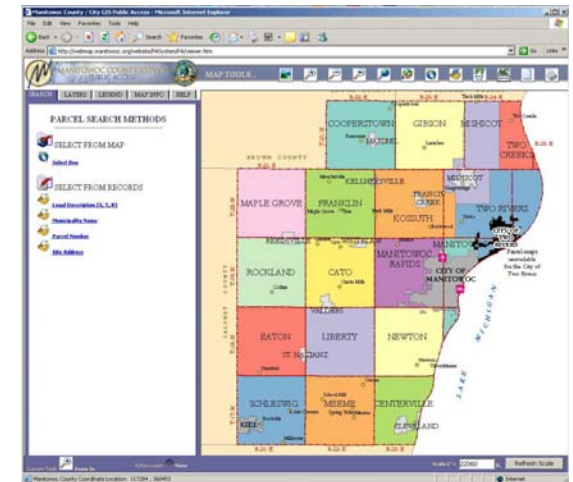
For Best Results You Will Need:  
Microsoft Internet Explorer, Version 6.0  
Fast Internet Connection (Cable or DSL recommended)  
Large, High Resolution Monitor (best viewed with screen resolution  
set to 1024 x 768 or higher)

Maps and associated data are believed to be accurate, but not warranted.  
These maps are not legal documents and are not  
intended for legal, survey, or related uses.



**Public Access Site**

*City and County of  
Manitowoc  
Land Records Viewer*



**[www.co.manitowoc.wi.us](http://www.co.manitowoc.wi.us)**

click Maps/GIS  
OR

**[www.manitowoc.org](http://www.manitowoc.org)**

click Maps  
Map Portal Page

*A joint project between the  
City of Manitowoc and  
Manitowoc County to provide  
citizens and businesses with  
parcel information*

1

# HOW TO NAVIGATE TO THE WEB SITE

www.co.manitowoc.wi.us click Maps/GIS OR

www.manitowoc.org click Maps Map Portal Page

UNDER GIS MAPS CLICK



2

# SEARCH

YOU HAVE THE ABILITY TO SEARCH FOR PARCELS BY THE FOLLOWING METHODS

SEARCH LAYERS LEGEND MAP INFO

PARCEL SEARCH METHODS

- SELECT FROM MAP
  - Select Box
- SELECT FROM RECORDS
  - Legal Description (S, T, R)
  - Municipality Name
  - Parcel Number
  - Site Address

Sections: [dropdown]  
Township: [dropdown]  
Range: [dropdown]  
Search Property Listings

Municipality Name: TOWN OF CATO  
Search Property Listings

House Number: (ex. 123)  
and/or  
Street Name: (ex. MAIN, ELM)  
Search Property Listings

Property Number:  
[ ] - [ ] - [ ] - [ ] . [ ]  
Search Property Listings

3

# LAYERS

THE MAP MAY BE CUSTOMIZED BY TURNING ON OR OFF THE DESIRED LAYERS

Select an "Active" layer which you would like inquire about.

Click the "Layers" tab and select the layers you want visible.

MAP LAYERS

Refresh Map

Visible Active

- CITY STREET ROW
- HARBOR LINES
- PLS TOWNSHIPS
- HIGHWAYS
- MAJOR STREAMS
- CITY ZONING
- COUNTY ZONING
- MUNICIPALITIES
- NEIGHBORING COUNTIES
- 2000 AERIAL PHOTOGRAPH

\*\*\*LAYERS MAY NOT APPEAR UNTIL THE MAP IS ZOOMED IN TO A CERTAIN EXTENT

4

# CLICK REFRESH MAP

# PRINTING

CLICK ON THE "PRINT MAP" ICON IN MAP TOOLS TO PRINT THE MAP

MAP LAYOUTS CAN BE CUSTOMIZED BY TITLE, PAGE SIZE, LAYOUT AND QUALITY THAT THE USER DESIRES.

SEARCH LAYERS LEGEND MAP INFO

MAP GENERATION

Type Map Title:  
Manitowoc City / County Mapping

Select Page Layout:  
Portrait

Select Page Size:  
Letter (8.5 x 11)

Select Printout Resolution:  
Normal Resolution

Scale:  
Set Scale Below The Main Map View.

Generate Map Output

THERE IS ALSO A PROPERTY MAP REPORT BUTTON LOCATED JUST BELOW THE PROPERTY LISTING INFORMATION AFTER A SEARCH IS COMPLETED. THIS PRINTOUT WILL GIVE YOU A MAP AND THE INFORMATION REGARDING THE PARCEL ON ONE SHEET.

5

# HELP

CLICK THE HELP TAB AT ANY TIME DURING A SESSION FOR ASSISTANCE

SEARCH LAYERS LEGEND MAP INFO HELP

Zoom In

Clicking on this button allows the user to do a point zoom or a box zoom. For a point zoom, click the button then move to the map area and click where you want to go. For a box zoom, click the button and the move to the map area and click and drag open a box on the area you wish to zoom in on.

6

# MAP TOOLS

THE FOLLOWING MAP TOOLS ARE PROVIDED TO ASSIST THE USER IN VIEWING AND QUERYING THE DATE PROVIDED

- ADD AN OVERVIEW TO MAP
- ZOOM IN BY BOXING AREA
- ZOOM OUT BY BOXING AREA
- RETURN TO PREVIOUS VIEW
- ZOOM TO FULL MAP EXTENT
- PAN
- SELECT PARCELS
- IDENTIFY ACTIVE LAYER FEATURES
- MEASURE DISTANCE
- MEASURE AREA
- CLEAR MAP FEATURES
- PRINT MAP